

# The PONDS

AT LEXINGTON

ENJOY STUNNING VIEWS OF NEARBY BLUE RIDGE AND ALLEGHENY MOUNTAINS

Call Westhills LTD Realtors at 540-943-9700 to make an appointment



**155 LILLY BELLE LANE • LEXINGTON, VA 24450 • MLS# 50078 • \$499,900**

**2,268 sq ft 1st level • 1,957 sq ft unfinished walk-out basement • Total sq ft: 2,324  
3 Bedrooms • 2 Baths • Side entry 2-car garage • Walk-out basement • 1.5 Stories**

The Ponds at Lexington offers magnificent views of both the Blue Ridge and the Allegheny mountains. Great view of Virginia Military Institute from sunroom. Built by Westhills Co, the Shenandoah Valley's premier builder of fine homes since 1970. The design offers plenty of flexibility with unfinished Bonus Room/4th BR upstairs. Plans for 5th BR, Bath, Family Room, Gallery, Wet bar and additional plans for the well-lit, full walk-out basement. Nine foot ceilings, tray and cathedral ceilings, add character along with triple crown moldings and double chair rail in the more formal rooms. Master Suite features two-person shower and radiant ceramic tile floors.

Directions: I-81-South to I-64 West-Lexington. First exit Left onto Rt 11 towards Lexington. Turn Left (just before Maury River) on to Old Buena Vista Road (VA 631) for approximately 1/2 mi. Turn Left into The Ponds, then first Right. House will be on your Left.

BUILT BY

  
**Westhills Co.**  
BUILDERS  
540-942-5857

Homes Designed, Built and Crafted with Pride  
by Westhills Co., the Shenandoah Valley's  
Premier Homebuilder Since 1970.

[www.WesthillsCo.com](http://www.WesthillsCo.com)

MARKETED BY

  
**Westhills Ltd.**  
REALTORS®  
540-943-9700



Enjoy spectacular panoramic mountain views and historic VMI from sunroom.



Gorgeous Kitchen – Maple cabinets...



...granite countertops & SS appliances.



View from Kitchen into Family Room



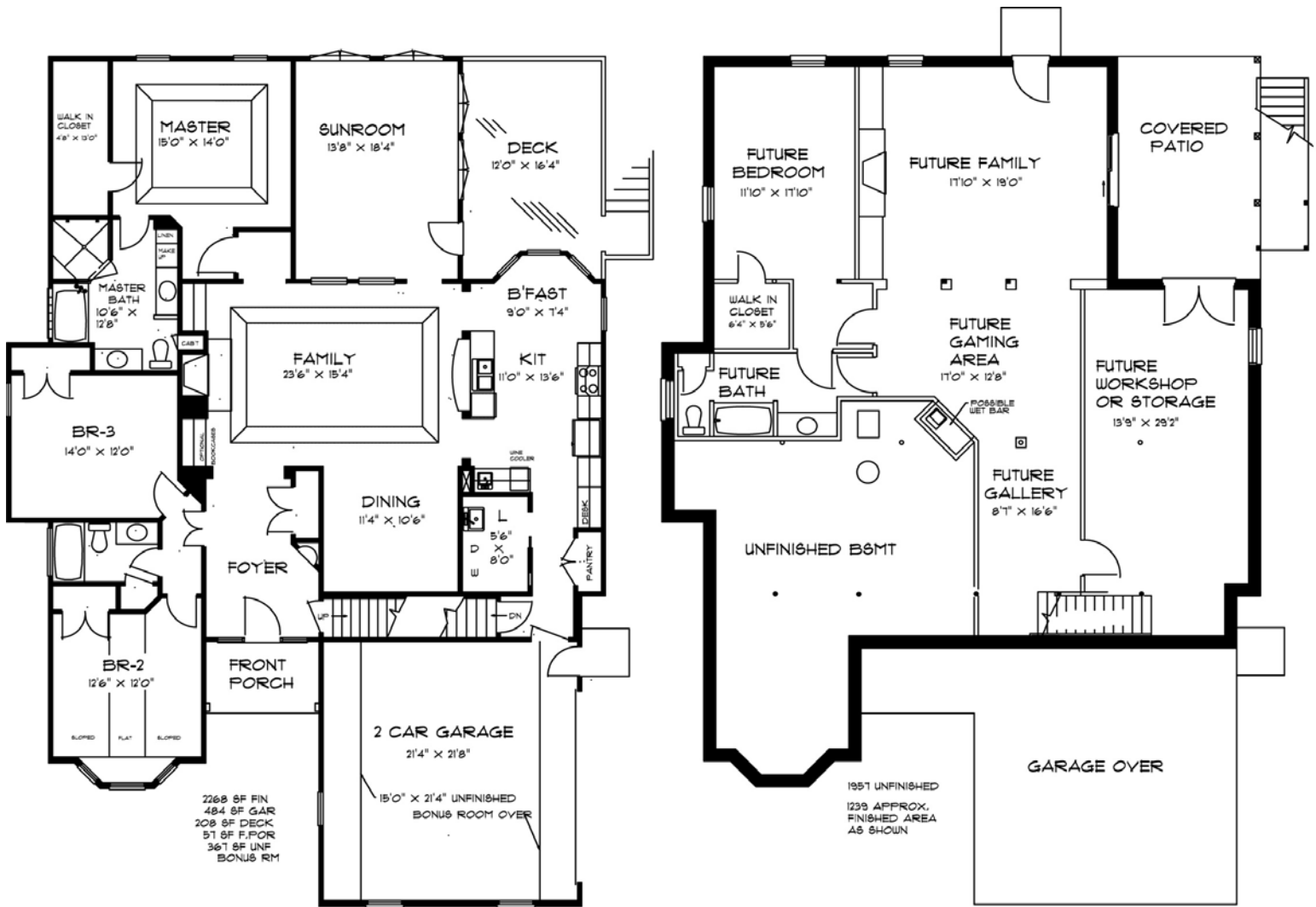
Spacious Dining Room with many details



Unfinished areas offer many possibilities



HUGE walk-out Basement – lots of room



FIRST FLOOR SQ FT: 2,268

UNFINISHED BASEMENT SQ FT: 1,957

TOTAL UNFIN. SQ FT: 2,324

**PROPERTY ADDRESS**

155 LILLY BELLE LANE • LEXINGTON, VIRGINIA 22450 • MLS# 50078



**THE PONDS AT LEXINGTON**

The Ponds at Lexington is a premier residential community featuring easy-living, high quality homes built by the Shenandoah Valley's most respected homebuilder, Westhills Co. of Waynesboro, Virginia. Since 1970, Westhills Co. Builders has been recognized for outstanding, architecturally-designed homes and communities.

For a showing or for more information, please call Rick Kane, Westhills LTD Realtors listing agent, (540) 241-2579

[www.WesthillsCo.com](http://www.WesthillsCo.com)



Information is deemed reliable, but not guaranteed. Plans subject to change without notice.

